



# Education and Police Charter

This charter outlines the agreement and commitment between Leicestershire Police and Education establishments in relation to engagement, communication and the provision of educational material and inputs by Leicestershire Police.

Published: April 8<sup>th</sup> 2025

Review: April 8<sup>th</sup> 2026



# Police Responsibilities

- All education establishments will have access to their local neighbourhood policing team. To find your local link visit [www.leics.police.uk/area/your-area](http://www.leics.police.uk/area/your-area). These local teams will:
  - ✓ Be an active joint partner in protecting and safeguarding children from harm.
  - ✓ Work with establishments to tackle relevant crimes affecting their students and local communities.
  - ✓ Take a problem-solving approach to support schools by working to prevent and detect crime & disorder
  - ✓ Provide a policing presence in establishments at times of local community need.
  - ✓ Foster positive relationships to promote trust and confidence in policing.
  - ✓ Develop an understanding of the risks and vulnerabilities to crime of your students.
- We will offer educational inputs within schools to increase awareness and safety of students. To find out more email [school.workshops@leics.police.uk](mailto:school.workshops@leics.police.uk).
- We will offer pre-planned student engagement visits to establishments and where possible protect these from operational demands.
- We will share relevant opportunities with the aim of increasing student safety and preventing harm.
- Safeguarding is everyone responsibility, as a joint partner we will provide advice and support regarding relevant policing issues or concerns.

- The Police will be represented at the VRN School Network Meetings as an active partner in reducing vulnerability and preventing violence.  
[www.violencereductionnetwork.co.uk/schools-network](http://www.violencereductionnetwork.co.uk/schools-network).

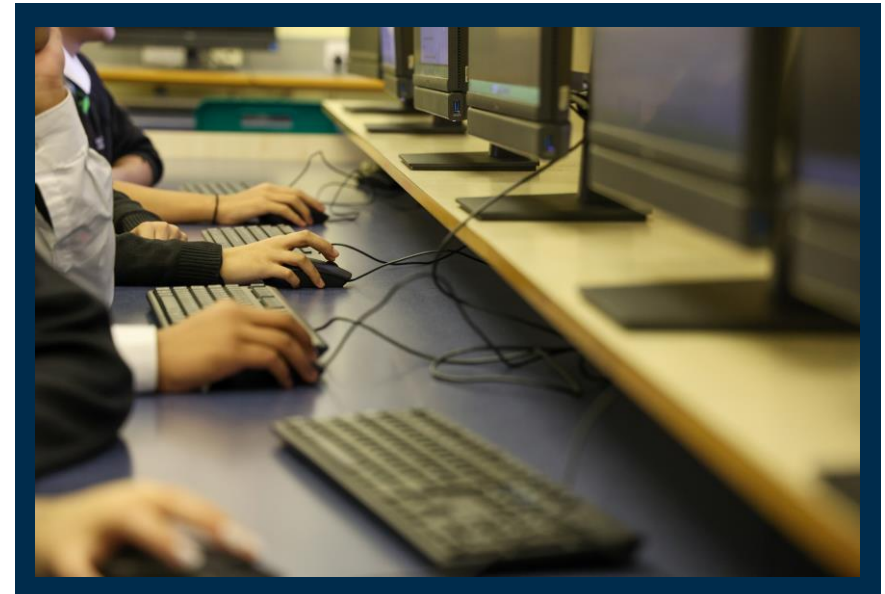


- We will provide strategic updates to all three of the local authorities Head Teachers Meetings and the DSL Forums.
- We will seek to strengthen our partnership approach with educational establishments by continually consulting and reviewing our offer with them.
- Where there is a safeguarding concern which is likely to need a police response we can be contacted on 999 in an emergency or [caiareferrals@leics.police.uk](mailto:caiareferrals@leics.police.uk) (Mon-Fri 7am-6pm) in non-emergencies.



# Education Responsibilities

- Provide Leicestershire Police with a designated point of contact - [\*\*school.workshops@leics.police.uk\*\*](mailto:school.workshops@leics.police.uk).
- Welcome police engagements with students to foster the development of positive relationships between them and the police.
- Share non-urgent information with the police through the community partnership intelligence portal. [\*\*www.leics.police.uk/community-partnership-intelligence\*\*](http://www.leics.police.uk/community-partnership-intelligence).
- Utilise the reporting guidance to ensure the most appropriate reporting pathways are being used. [\*\*www.npcc.police.uk/SysSiteAssets/media/downloads/publications/publications-log/2020/when-to-call-the-police--guidance-for-schools-and-colleges.pdf\*\*](http://www.npcc.police.uk/SysSiteAssets/media/downloads/publications/publications-log/2020/when-to-call-the-police--guidance-for-schools-and-colleges.pdf).
- Communicate relevant police information, alerts, crime prevention and safety advice with staff, students and parents/carers.
- Sign-up to the Leicester, Leicestershire and Rutland drugs alert system to receive important and current drugs information for your area. [\*\*caroline.gadsby@turning-point.co.uk\*\*](mailto:caroline.gadsby@turning-point.co.uk)
- Ensure effective information sharing with Police for safeguarding matters in line with Working Together to Safeguard Child 2023
- Sign up to Operation Encompass [\*\*www.operationencompass.org/educational-settings\*\*](http://www.operationencompass.org/educational-settings) to allow for police to share information regarding students involved in incidents of domestic abuse.



## Resources

You can find a range of resources, tools and further learning here:

- [\*\*www.livesafe.org.uk\*\*](http://www.livesafe.org.uk)
- [\*\*www.violencereductionnetwork.co.uk\*\*](http://www.violencereductionnetwork.co.uk)
- [\*\*www.youthendowmentfund.org.uk/reports/educational-guidance/\*\*](http://www.youthendowmentfund.org.uk/reports/educational-guidance/)

